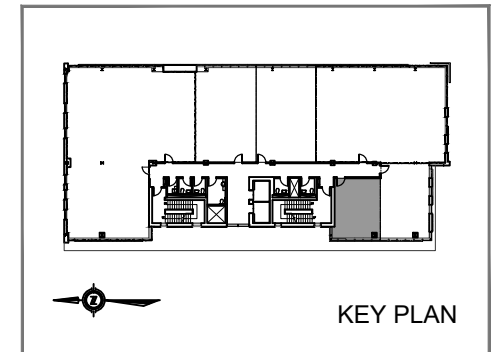


WEST FIVE



KEY PLAN

2021 05 07



Experience. The Difference.™

WEST 5
1305 Riverbend Rd., London
Suite 300

548 Sq. Ft. Leaseable
477 Sq. Ft. Useable
Scale: $\frac{1}{8}'' = 1'-0''$

SIFTON PROPERTIES LIMITED | COMMERCIAL PROPERTIES | P: 519.434.1000 | E: lease@sifton.com