

THE WHISPERING PINE

15 -1080 Upperpoint Ave. - \$849,900



1470 sq.ft.



2 Bedroom

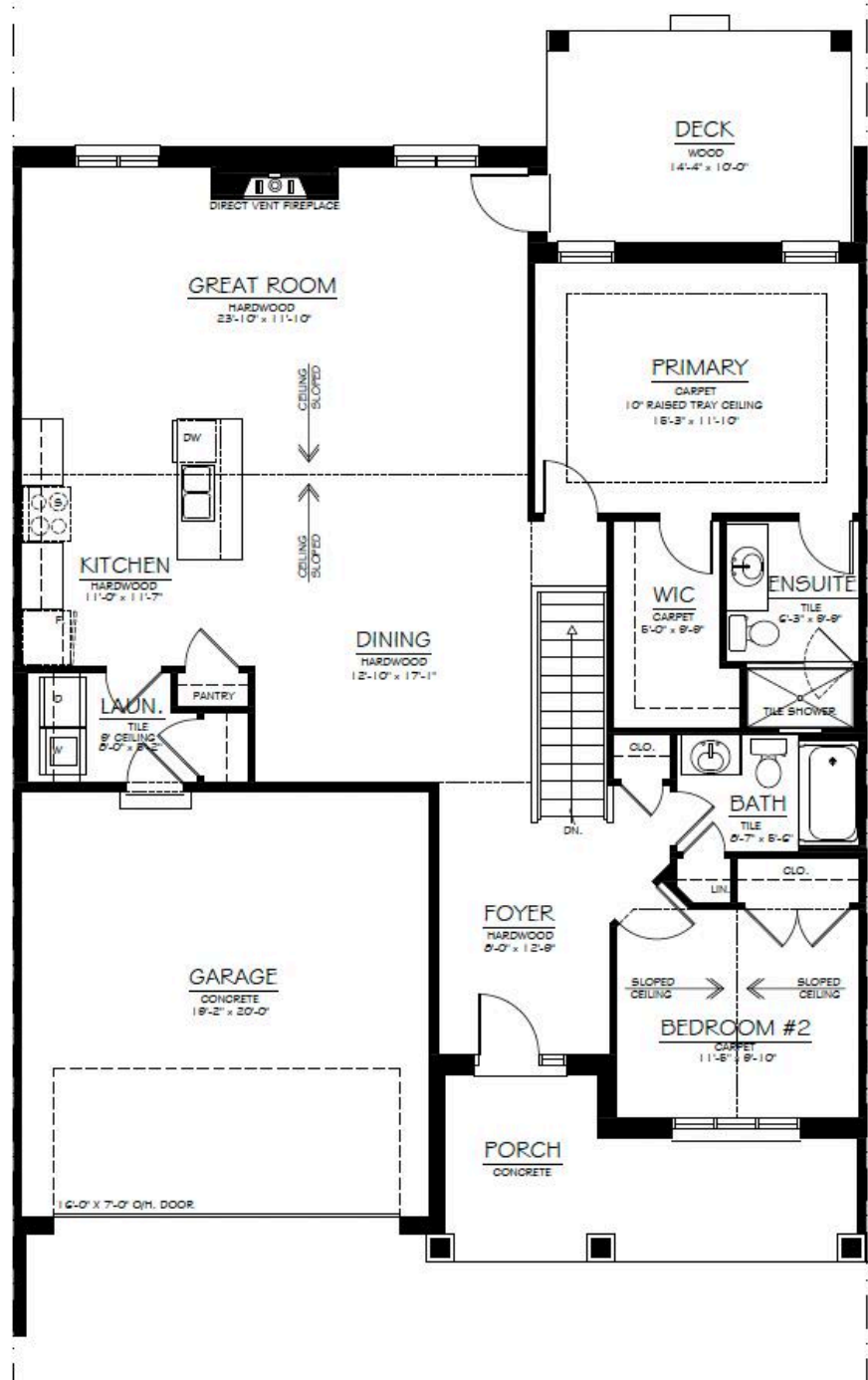


2 Bathroom



Special Features

- Overlooks Upperpoint Park
- 2 Bedrooms, 2 baths
- Upgraded cabinets and features
- Water line to fridge
- Main bath vanity cabinet with storage drawer
- Custom range hood
- Main floor laundry with upper cabinets
- Vaulted great room ceiling and bedroom 2
- Tray ceiling in master bedroom
- FP wall braced and wired for TV
- Gas Fireplace with tile surround, painted wood mantel
- Large picture windows frame the fireplace bump-in
- Upgraded plumbing fixtures
- Quartz countertops with undermount sinks
- Custom kitchen backsplash
- Matte black lever passage sets throughout
- Custom tiled shower with tiled floor, niche and vapour proof potlight
- Engineered oak hardwood in dining, kitchen, foyer and main floor hallway
- Upgraded step castings and baseboards
- Finished security system
- Custom Lighting
- Left-hand drive
- Double attached garage with steel insulated door and inside entry
- Garage door opener with battery backup and smart phone compatibility
- Roof covered deck with glass railings
- Terrace door to deck
- Full front porch
- Exterior transom windows per plan
- Basement bath rough-in
- Laundry tub in basement
- Finished and ready for move-in



Barb Owens
SALES ASSOCIATE

☎ 519-200-9765
✉ barb.owens@sifton.com

Prices subject to change without notice. E. & O. E.
All prices include H.S.T. with applicable rebates
signed back to Sifton Properties Limited.
November 2024



Experience. The Difference.™