

# THE BAYHILL

1506 Moe Norman Place - \$792,800



1916 sq.ft.



2 Bedroom



2 Bathroom



## Special Features

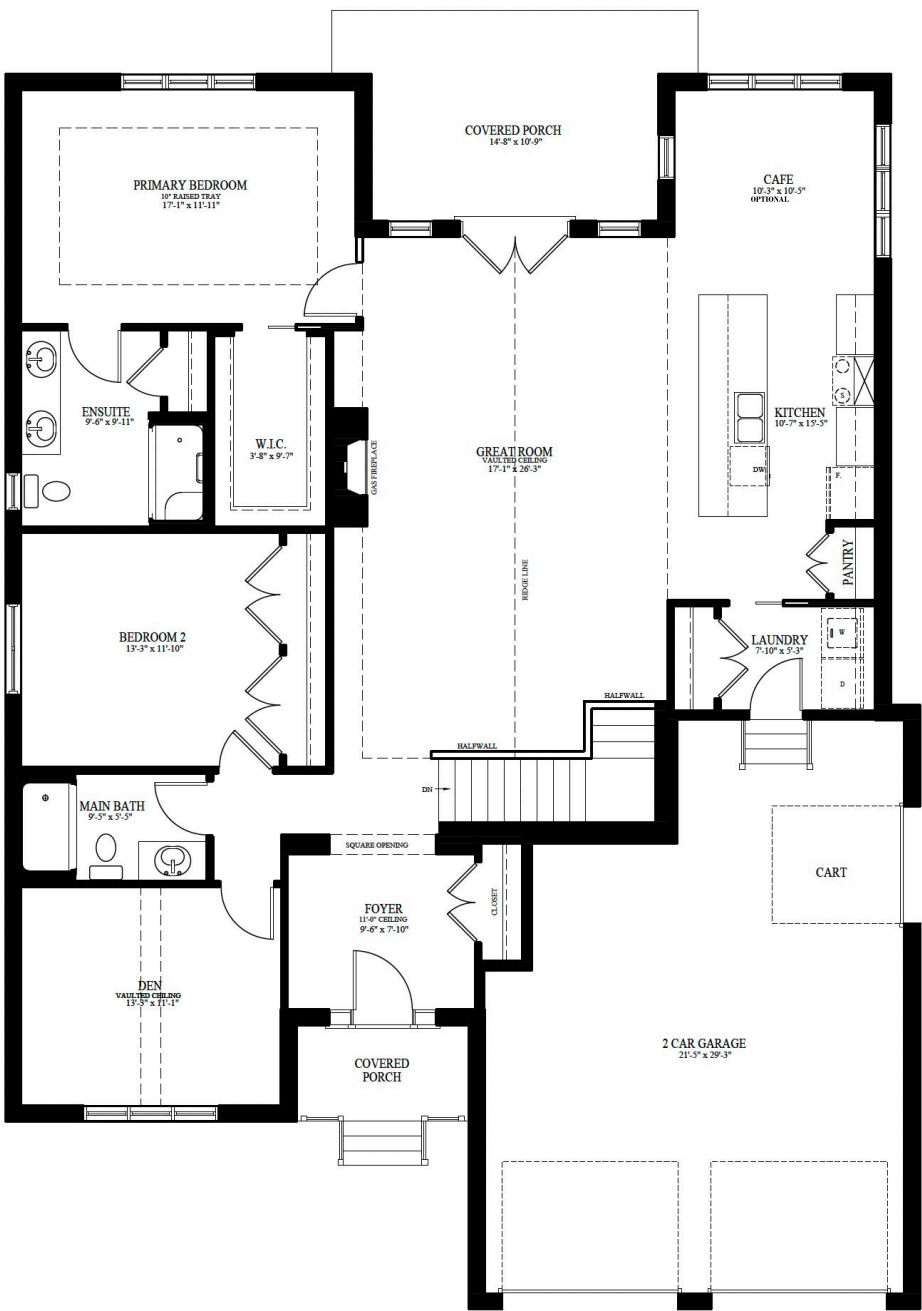
- Modern Envy house numbers
- Garage door revised to two 8'x7' garage doors with Stockton long inset glass for the garage doors
- Garage enlarged by 49 sq. ft.
- Mullions added to rear elevation windows
- Additional Electrical - includes 4" LED pot lights in kitchen and great room, kitchen valance rough-in
- Bracing Package for TV mounting
- Ensuite second sink rough-in- includes additional GFI, and additional outlet
- Enlarged Rear Porch - additional 27 sq.ft. with covered and revised roofline
- Vaulted Ceiling revision
- Fireplace relocated to interior wall
- Window changes to Den, Great Room, Ensuite & Café
- Reconfigured Main floor & Ensuite with pocket door addition to WIC

**Land Lease:** \$1065.48/monthly

**Maintenance Fee:** \$633.61/monthly

As of January 1st, 2025 the RiverBend maintenance fee includes 24-hour concierge service, landscaping maintenance, irrigation, snow removal & Clubhouse privileges.

Please note that there is an annual \$900.00 payment due to the Clubhouse each year for food and beverage.



**Sharon Riopelle**

RiverBend Community  
Sales Representative



519-657-4333



sharon.riopelle@riverbendgolf.com

Prices subject to change without notice. E. & O. E.  
All prices include H.S.T. with applicable rebates  
signed back to Sifton Properties Limited.  
November 2024



Experience. The Difference.™