

THE WHISPERING PINE

3 -1080 Upperpoint Ave. - \$843,000



1470 sq.ft.



2 Bedroom

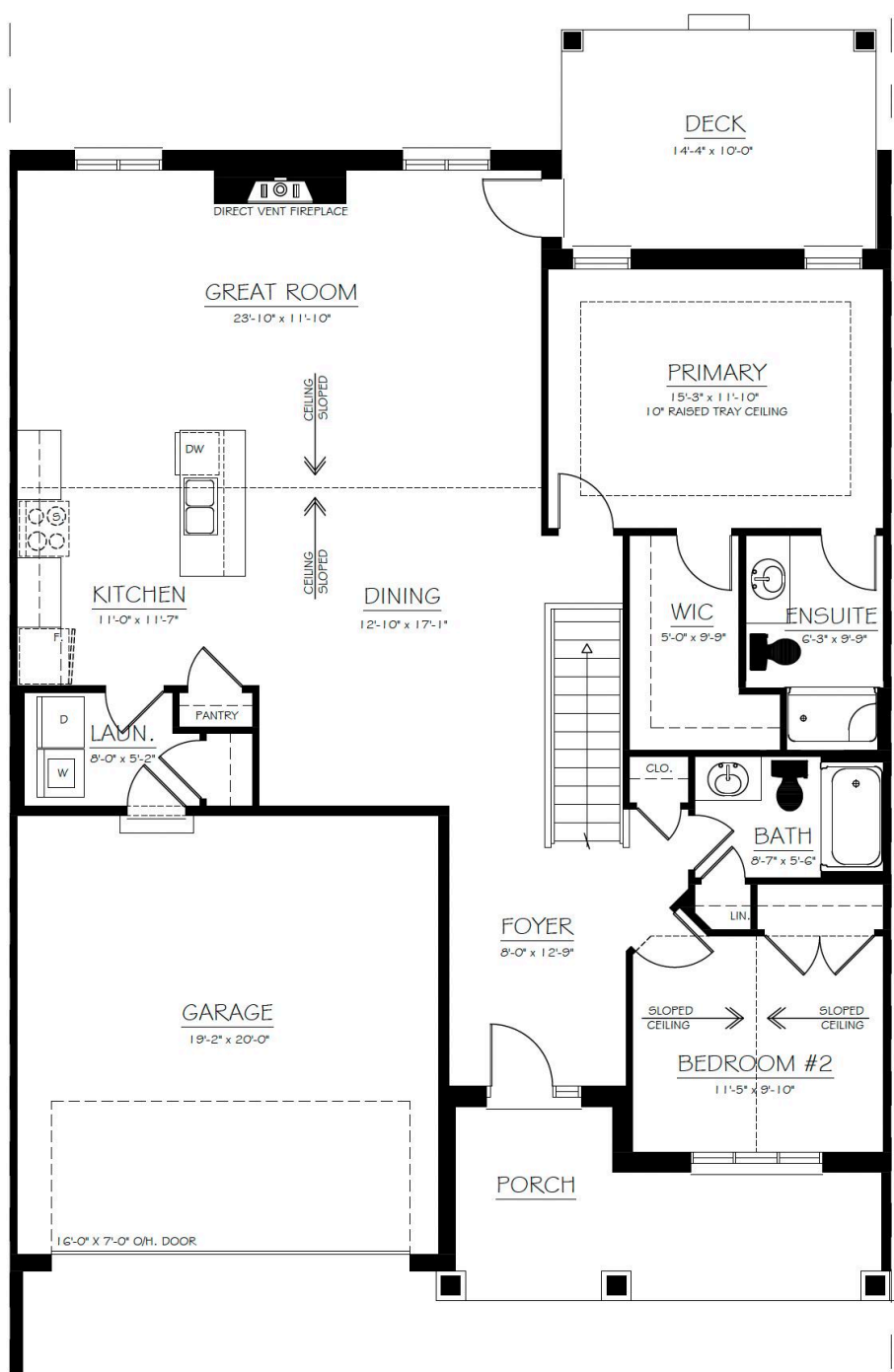


2 Bathroom



Special Features

- Overlooks Upperpoint Park
- 2 Bedrooms, 2 Baths
- Full front porch
- Transom windows per plan
- Roof covered private deck
- Glass railing on deck
- Terrace door to deck
- Vaulted great room ceiling & bedroom 2
- Tray ceiling in master bedroom
- Master ensuite with walk-in shower and doors
- Main bathroom tub-shower, linen closet
- FP wall braced and wired for TV
- 4 LED pot lights in great room
- Gas Fireplace with tile surround, painted wood mantel
- Kitchen pantry
- Water line to fridge
- Roughed in for under cabinet lighting in kitchen
- Double attached garage with steel insulated door and inside entry
- Garage door opener with battery backup and smart phone compatibility
- Left-hand drive
- Basement bath rough-in
- Laundry tub in basement
- Ready for custom interior finish



Barb Owens
SALES ASSOCIATE



519-200-9765



barb.owens@sifton.com

Prices subject to change without notice. E. & O. E.
All prices include H.S.T. with applicable rebates
signed back to Sifton Properties Limited.
November 2024



Experience. The Difference.™