

THE DOUGLAS FIR

5-1080 Upperpoint Ave. - \$795,000



1633 sq.ft.



2 Bedroom
+ Den

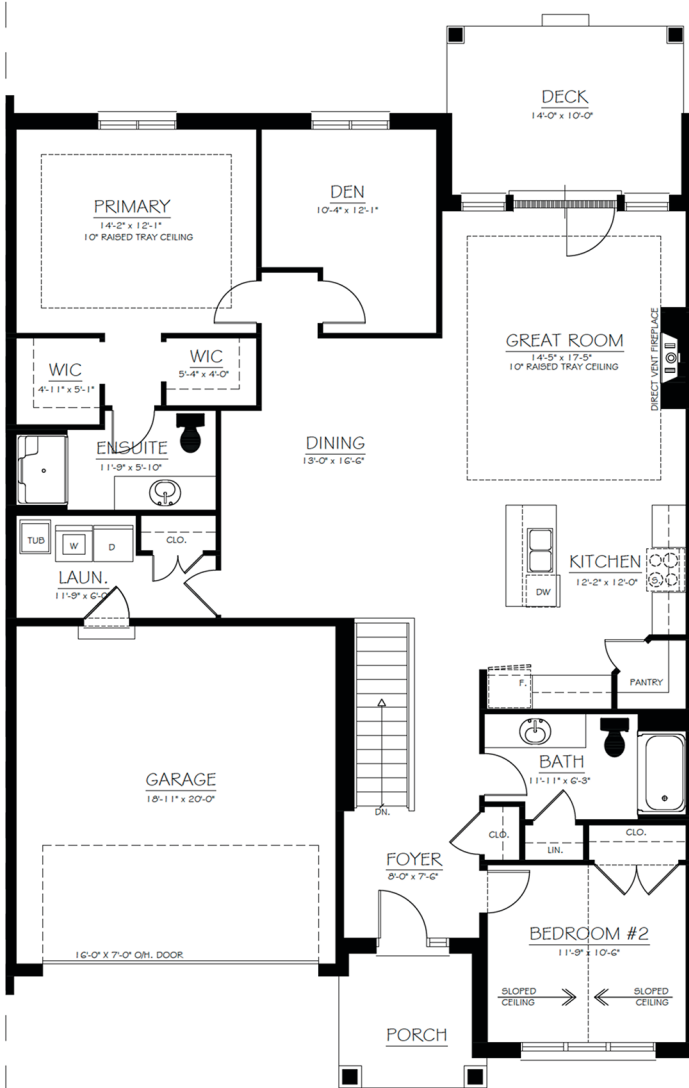


2 Bathroom



Special Features

- 2 + den, 2 Baths
- Views overlook park
- Roof covered deck with glass railings
- Large open dining room
- 4 LED pot lights in great room
- Gas fireplace with tile surround and painted wood mantel
- Wall braced and wired for TV above FP
- Corner pantry & island bar in kitchen
- Custom millwork with soft close doors and drawers
- Roughed-in for under cabinet lights
- Water line to the fridge
- Double attached garage with steel insulated door and inside entry
- Garage door opener with battery backup and smart phone capability
- Main floor laundry with tub and upper cabinets over future appliances
- Master ensuite and walk-in shower with doors
- 2 Master closets
- Main bath with tub-shower, linen cupboard
- Office/den adjacent to master bedroom
- Exterior transom windows per plan
- Basement bath rough-in
- Finished and ready for move-in



Barb Owens
SALES ASSOCIATE



519-200-9765



barb.owens@sifton.com

Prices subject to change without notice. E. & O. E. All prices include H.S.T. with applicable rebates signed back to Sifton Properties Limited. November 2024



Experience. The Difference.™