

THE WALNUT

55 Aspen Circle - \$1,183,900



2906 sq.ft.



4 Bedroom

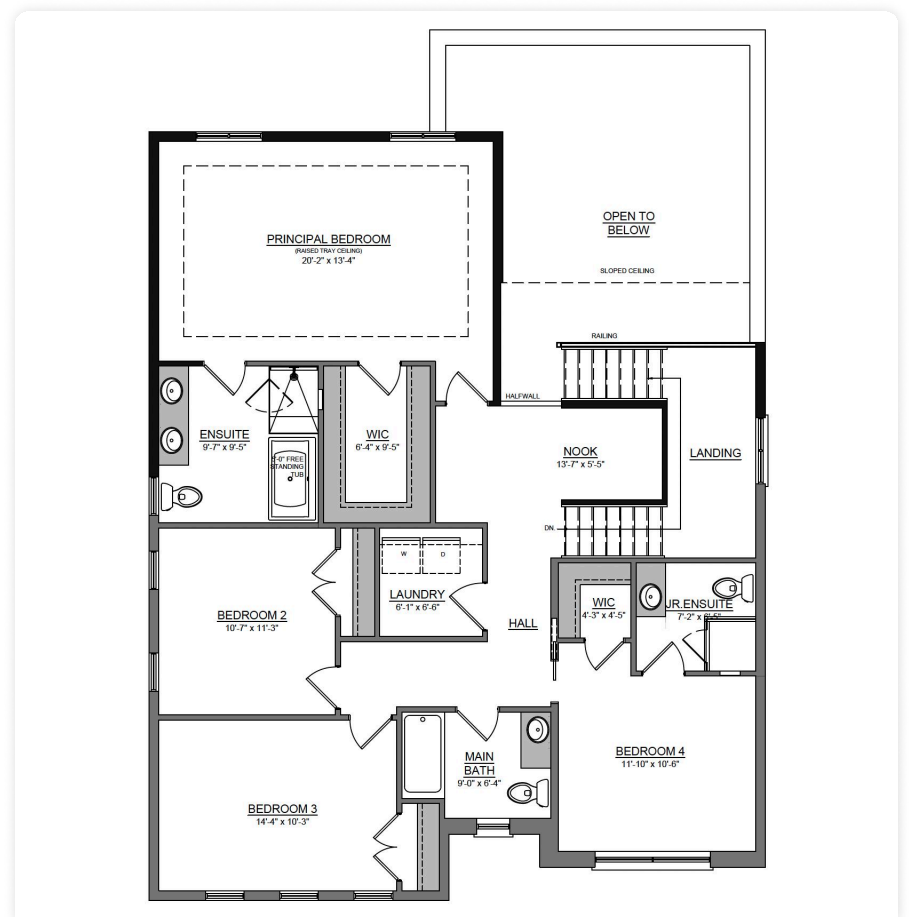
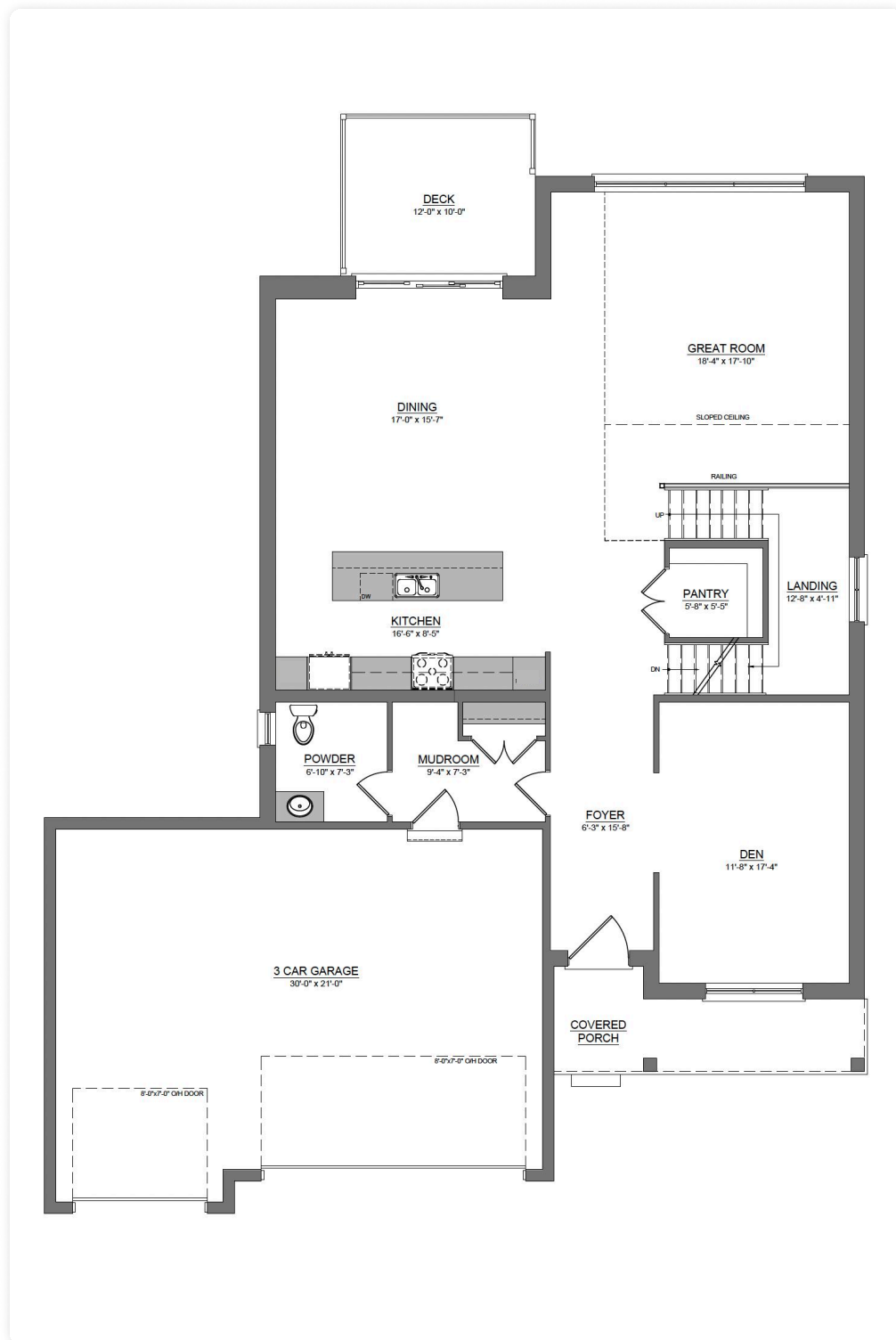


3.5 Bathroom



Special Features

- Arriscraft stone & James Hardi Siding on front exterior
- Mahogany grain front door with matte black handle
- Black interior windows throughout home
- 8' interior doors throughout main floor
- Upgraded ash wood stairs
- Large walk-in pantry off kitchen
- Additional 152 sq.ft added to plan
- Upgraded 9'x8' sliding patio door to deck
- Additional pot-lights throughout main floor & second floor
- Rough-in for under cabinet lighting in kitchen
- Rough-in for under vanity lighting in ensuite
- Upgraded pocket door to bedroom 4
- Mirolin tub with tiled walls in main bath
- Additional ensuite added to bedroom 4
- Custom tiled shower with glass in ensuite
- Stove Gas Line with flex connect & (2) BBQ Gas lines with quick connect
- Extended covered front porch
- Premium 59' partial look-out lot



Brittany Ready
SALES ASSOCIATE

226-926-8196

brittany.ready@sifton.com

Prices subject to change without notice. E. & O. E.
All prices include H.S.T. with applicable rebates
signed back to Sifton Properties Limited.
November 2024



Experience. The Difference.™