

# THE CHESTNUT

59 Basil Cres. - \$962,000



1756 sq.ft.



2 Bedroom

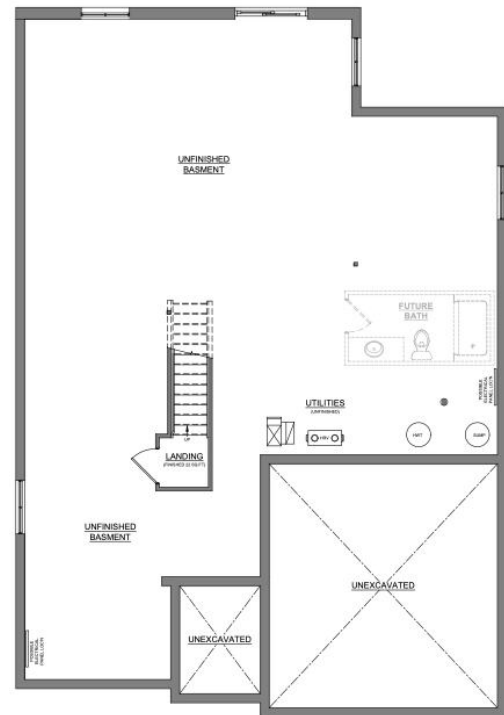
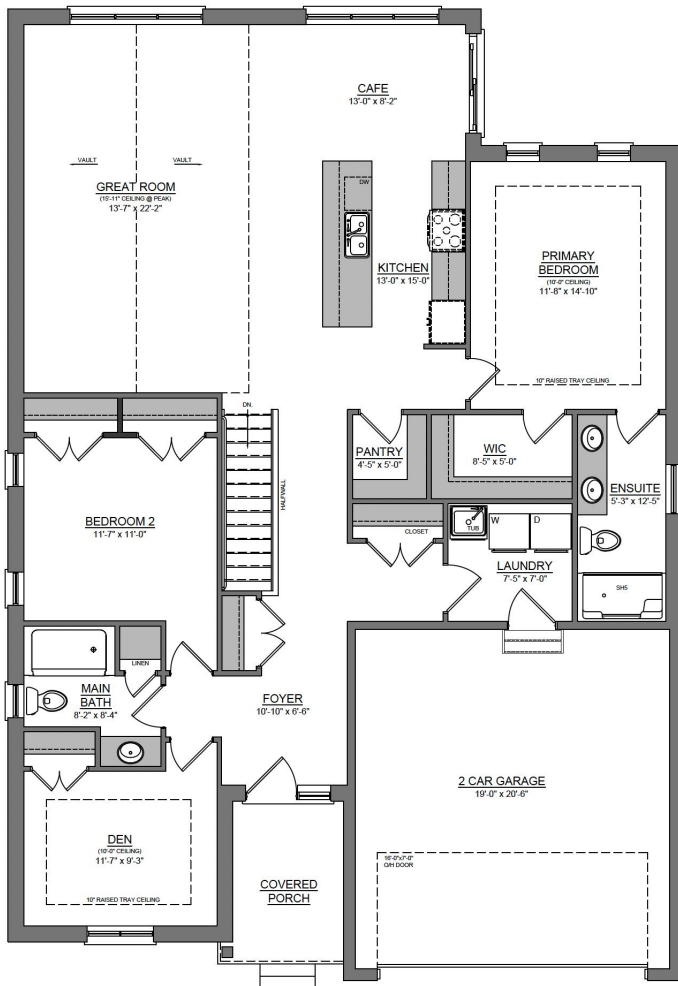


2 Bathroom



## Special Features

- Upgraded matte black house numbers
- 8' front door with upgraded matte black handle
- Black SDL grills for windows on front of home
- 8' interior doors throughout main floor
- 8' patio door to back deck
- 4" potlights throughout main floor of home
- Rough-in for under cabinet lighting in kitchen
- Upgraded exterior light fixtures from the Lighting Shoppe
- Premium 49' walk-out lot



**Barb Owens**  
SALES ASSOCIATE

519-200-9765  
barb.owens@sifton.com

Prices subject to change without notice. E. & O. E. All prices include H.S.T. with applicable rebates signed back to Sifton Properties Limited. March 2026.

**Sifton**