

THE HAZEL

64 Basil Cres. - \$927,900



2906 sq.ft.



4 Bedroom

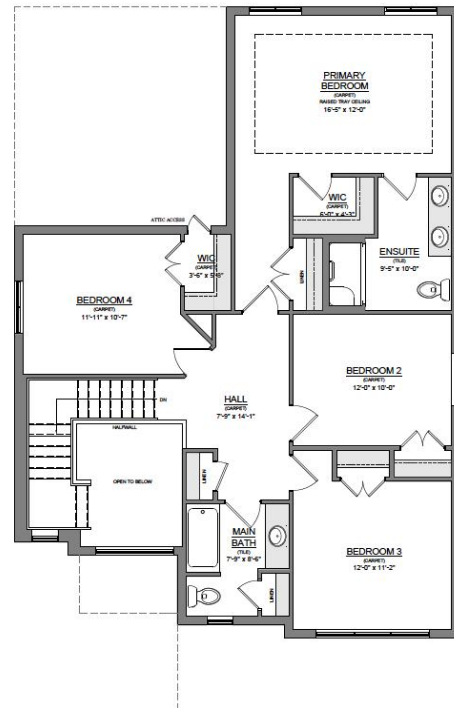
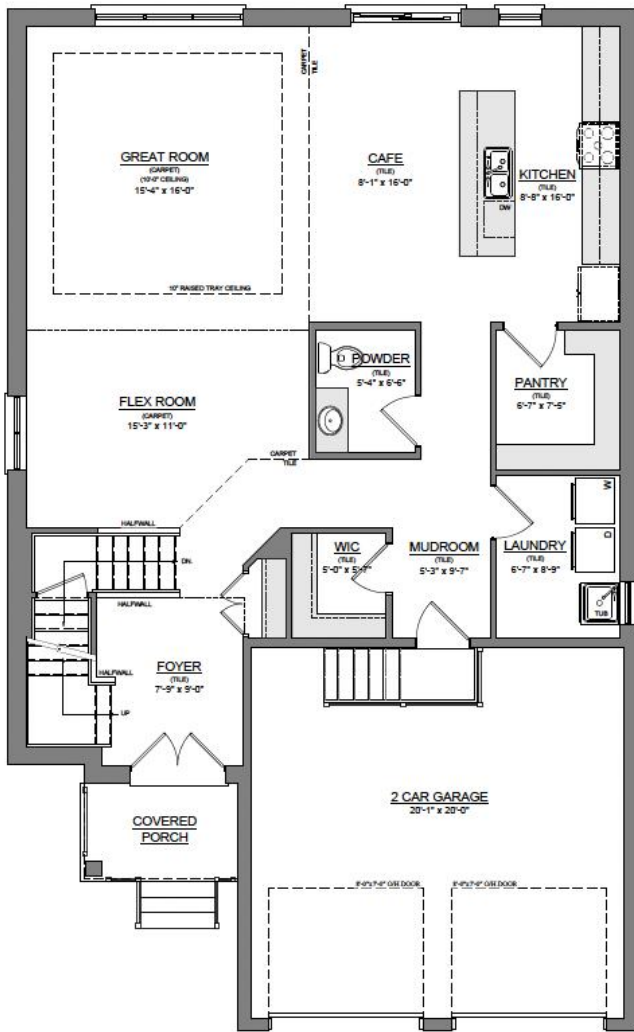


3.5 Bathroom



Special Features

- LiftMaster Garage door opener
- Weiser "Halifax" brushed nickel door levers throughout home
- Engineered Hardwood in Great Room
- Elongated toilets in powder, ensuite, and main baths
- Rough-in for fridge waterline
- Custom millwork by GCW (now Casey's Creative Kitchens)
- Under cabinet lighting in kitchen
- Mythical Series "ICE" backsplash in Kitchen
- Chimney style range hood
- Quartz countertops in kitchen and primary ensuite
- 4" Pot lights in Great Room & Kitchen
- UrbanWood King's Cross Engineered Hardwood in Great Room & Flex Room
- Hanstone Whistler Quartz Countertop in Kitchen
- MARS Space Black Quartz in Ensuite



Barb Owens
SALES ASSOCIATE

519-200-9765
barb.owens@sifton.com

Prices subject to change without notice. E. & O. E. All prices include H.S.T. with applicable rebates signed back to Sifton Properties Limited. March 2026.

