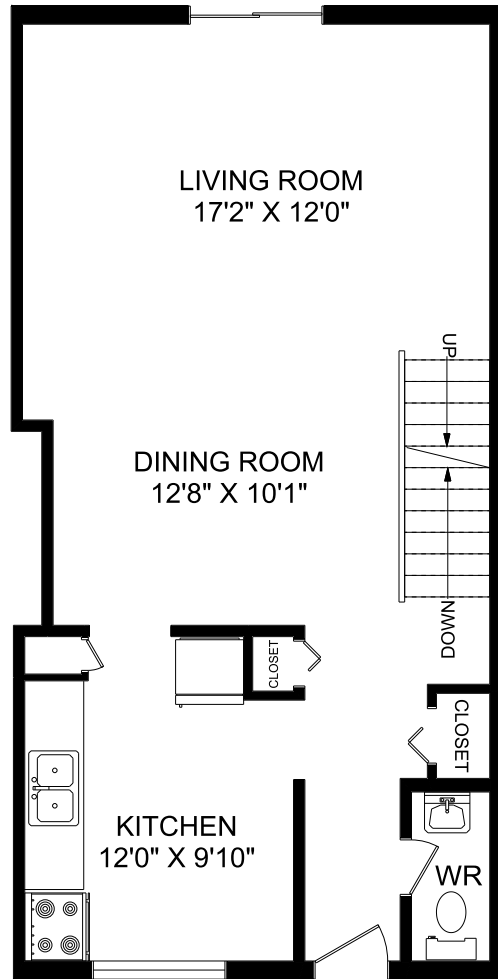
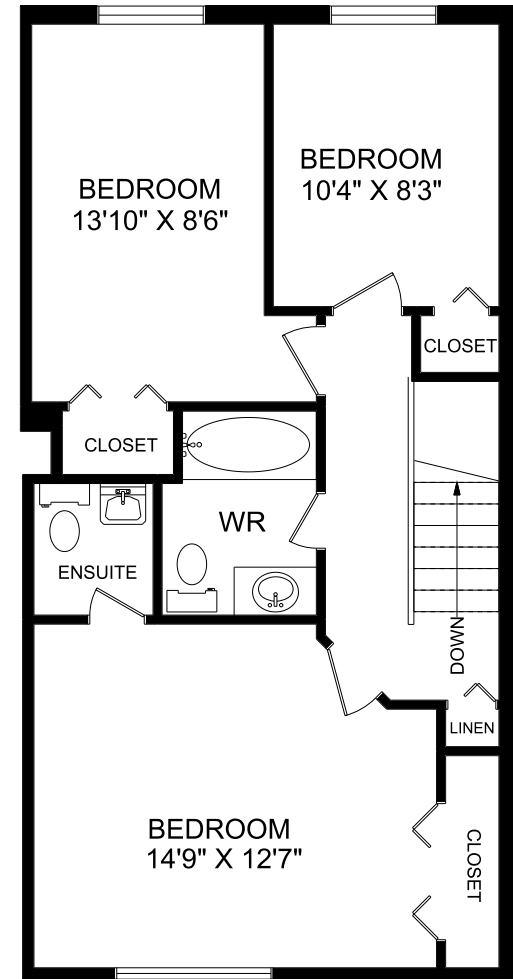


BASEMENT



MAIN FLOOR



SECOND FLOOR



Experience. The Difference.™

BRIER PARK
 241 Dunsdon Street
 Brantford, Ontario N3R7C3

3 Bedroom Regular
 1,292 sq. ft.

SIFTON PROPERTIES LIMITED | RESIDENTIAL RENTALS | P: 519.759.8210 | E: rentbrantford@sifton.com