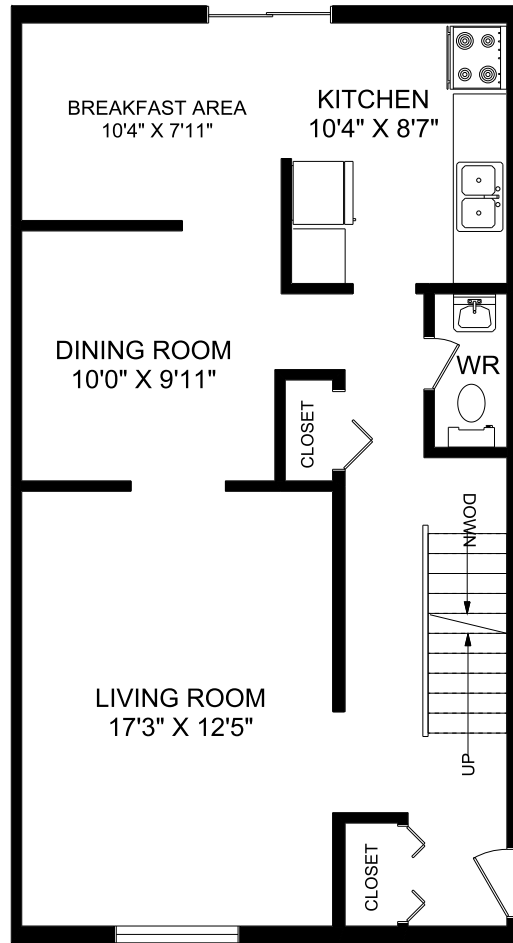
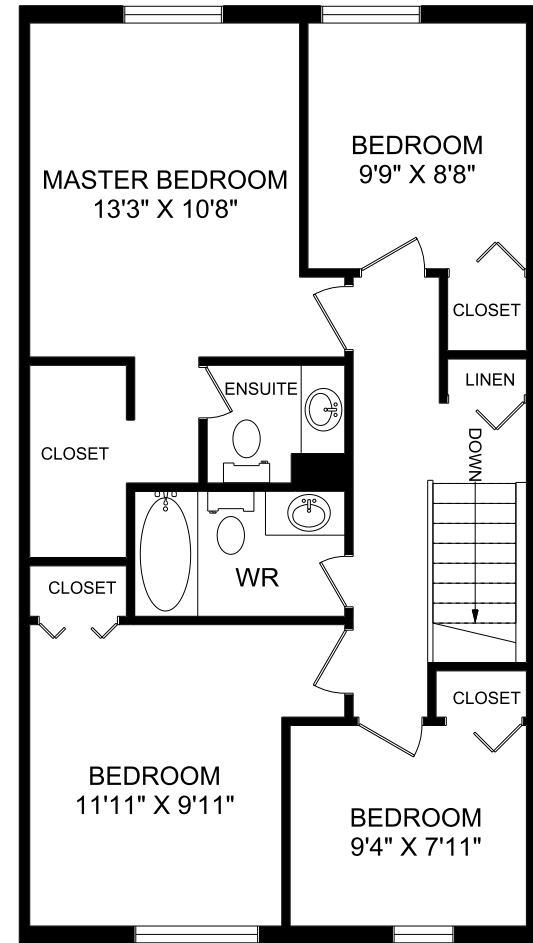


BASEMENT



MAIN FLOOR



SECOND FLOOR



Experience. The Difference.™

**BRIER PARK**  
 241 Dunsdon Street  
 Brantford, Ontario N3R7C3

4 Bedroom Regular  
 1,519 sq. ft.

SIFTON PROPERTIES LIMITED | RESIDENTIAL RENTALS | P: 519.759.8210 | E: rentbrantford@sifton.com