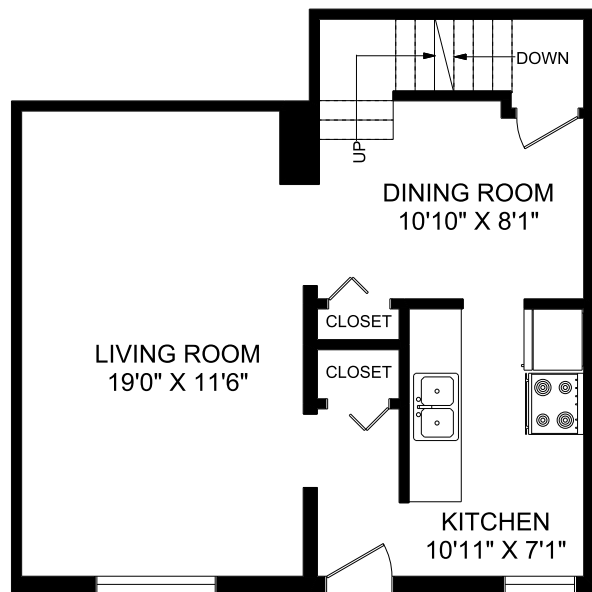
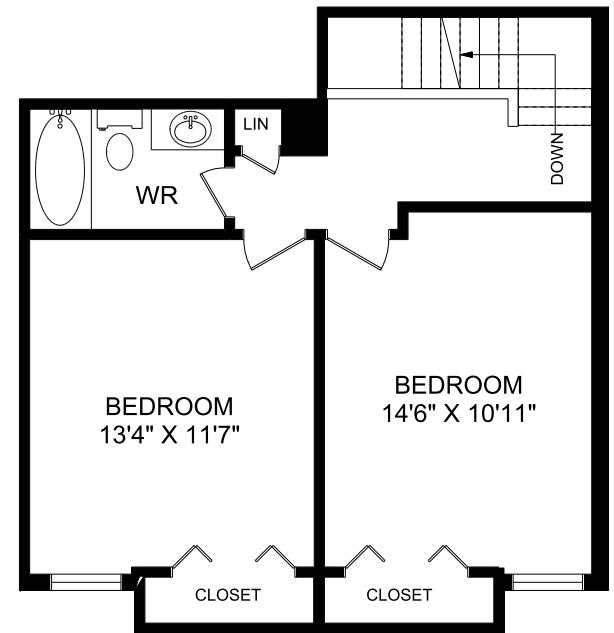


BASEMENT



MAIN FLOOR



SECOND FLOOR



Experience. The Difference.™

**PRIORY PARK**  
 299 Scottsdale Drive  
 Guelph, Ontario N1G 3A1

2BB - 2 Bedroom  
 1,081 sq. ft.

SIFTON PROPERTIES LIMITED | RESIDENTIAL RENTALS | P: 519.823.1500 | E: rentguelph@sifton.com