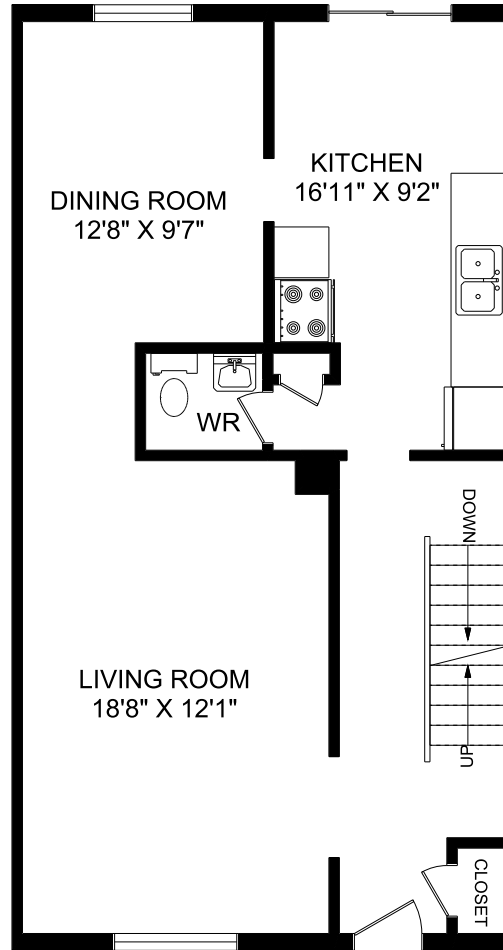
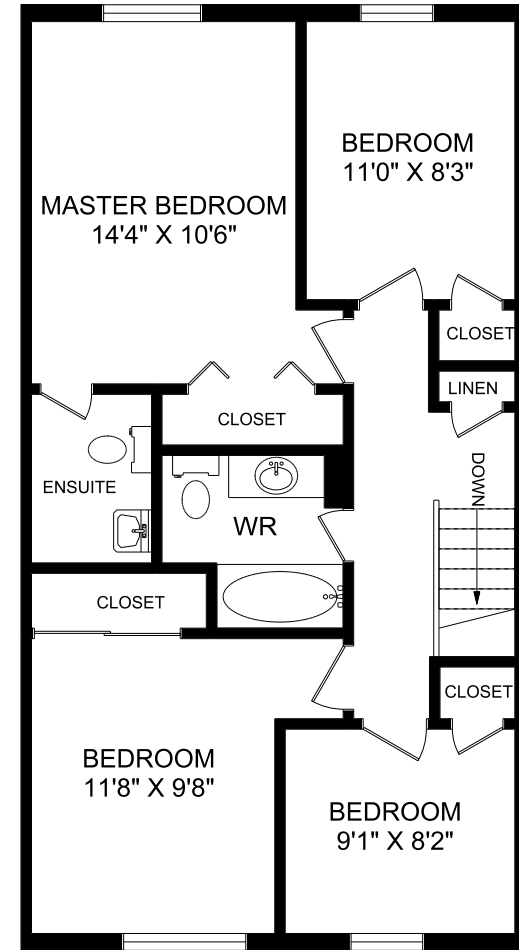


BASEMENT



MAIN FLOOR



SECOND FLOOR



Experience. The Difference.™

PRIORY PARK
299 Scottsdale Drive
Guelph, Ontario N1G 3A1

4AD - 4 Bedroom
1,494 sq. ft.

SIFTON PROPERTIES LIMITED | RESIDENTIAL RENTALS | P: 519.823.1500 | E: rentguelph@sifton.com