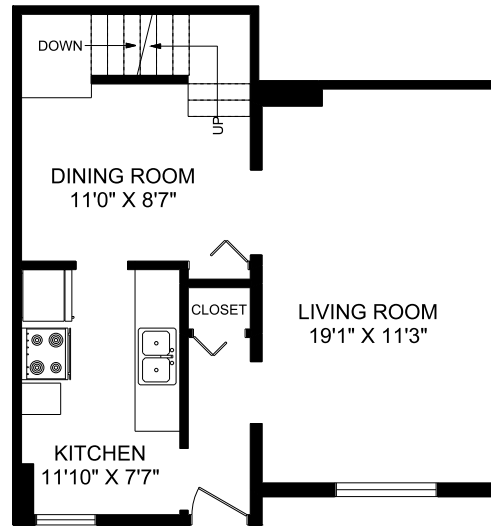
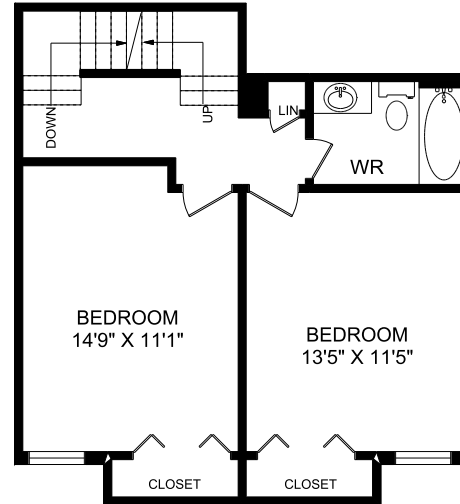


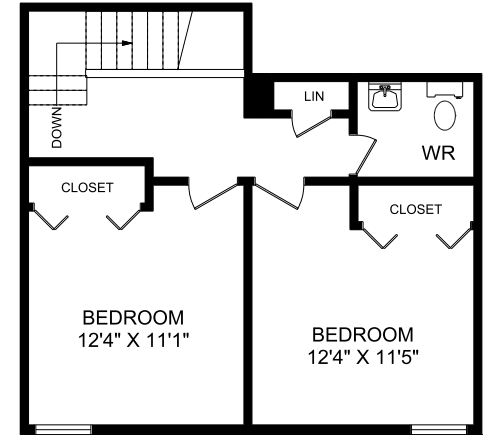
BASEMENT



MAIN FLOOR



SECOND FLOOR



THIRD FLOOR



Experience. The Difference.™

PRIORY PARK
 299 Scottsdale Drive
 Guelph, Ontario N1G 3A1

4BB - 4 Bedroom
 1,574 sq. ft.

SIFTON PROPERTIES LIMITED | RESIDENTIAL RENTALS | P: 519.823.1500 | E: rentguelph@sifton.com