



Experience. The Difference.™

Hazel



CONTEMPORARY

This detailed floor plan shows a 2-car garage house with the following rooms and features:

- Garage:** 2 CAR GARAGE, 20'-1"x20'-0". Includes a weather-stripped 22"x30" attic access and a 3'-0"x7'-0" OH DOOR.
- Living Areas:**
 - GREAT ROOM:** 15'-3"x16'-0" (CARPET).
 - FLEX ROOM:** 15'-3"x11'-2" (CARPET).
 - FOYER:** 6'-8"x8'-11" (CARPET).
- Kitchen & Dining:**
 - KITCHEN:** 8'-7"x16'-0" (TILE). Includes a DW (dishwasher) and a 12" raised tray chiding.
 - CAFE:** 8'-2"x16'-0" (TILE).
 - PANTRY:** 6'-6"x7'-4" (TILE).
- Bathrooms & Closets:**
 - POWDER:** 5'-4"x6'-9" (TILE). Includes a 42" V.
 - W.I.C. (Walk-In Closet):** 5'-0"x5'-6" (TILE).
 - CLASSET (Closet):** Located near the Foyer.
- Halls & Mudrooms:**
 - HALL (TILE):** Multiple locations connecting rooms.
 - MUD ROOM (TILE):** Includes steps to suit.
- Other Features:**
 - INTERCONNECTED SMOKE & CO DETECTOR:** Located in the Hall.
 - LINE OF FLOOR ABOVE:** Indicated in the Great Room and Garage areas.
 - UP 16R:** Stairs leading up from the Foyer.
 - DOWN 16R:** Stairs leading down from the Foyer.
 - 42" HALF WALL:** Located near the stairs.



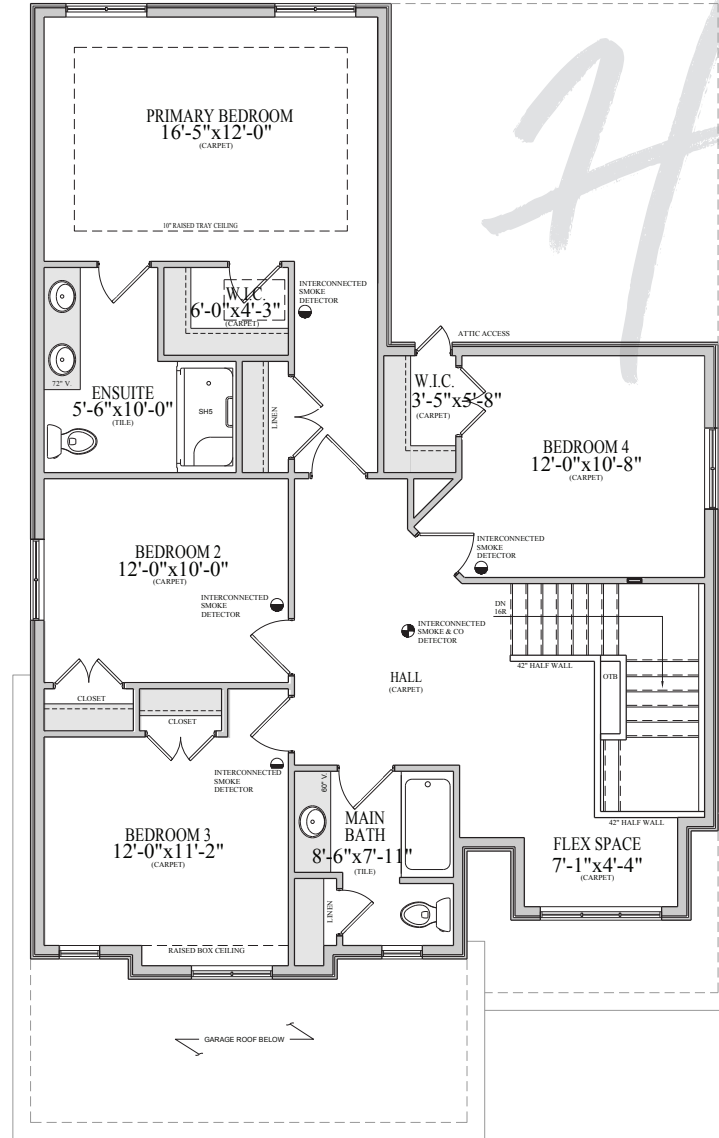
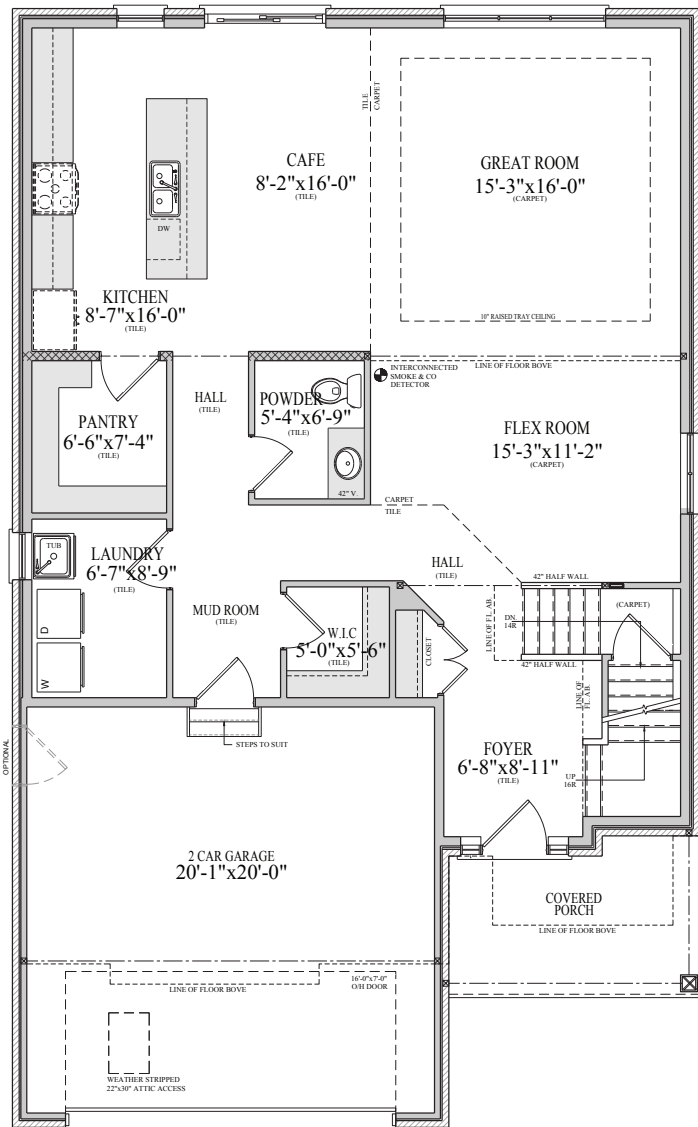


Experience. The Difference.™

Hazel

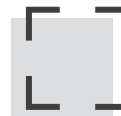


TRADITIONAL



Hazel

Artist's concept only. Plans and specifications subject to change without notice.
Floor plan based on elevation A. Sizes are approximate. E & O.E.



2565 SQ.FT.



4 BEDROOM



3 BATH